

# Primary School Capital Programme (Strategy For Change)

*Presentation to Committees Areas 2, 6 and 8*



## **Background key facts**

### **Nottingham**

- **One of 23 local pathfinder' authorities working with the Department for Children, Schools and Families (DCSF) to develop the Government's Primary Capital Programme**

### **The Primary Capital Programme**

- **a strategic and long-term capital investment programme.....**
- **expected to run for 15 years**
- **subject to future government spending decisions**

## **Background key facts**

**NCC produced a Primary Strategy for Change document that sets out proposals for developing, agreeing and implementing a strategic approach to capital investment for primary schools**

## **Key dates**

**22 April 2008**

**Executive Board approved**

- **The Primary Strategy for Change and its submission to the DCSF and also**
- **The first 6 schools identified for investment and development of the 'Learning Platform' for ALL City schools**

**27 March 2009**

**Approval of £18,000,538 funding from the DCSF**

## Background key facts

Successful bid in 2007 resulted in Nottingham City Council receiving an additional £6.5 million from the DCSF to develop an 'exemplar high quality school'

- Southwark Primary School
  - the first primary school to be selected for rebuilding
  - on programme for completion in February 2010

## Overall aims of the Primary Capital Programme?

- to re-build, remodel or improve at least half of all primary schools
- ensuring they are **appropriately equipped for 21st century learning**
- at the **heart of the community** with
- children's services **in reach of every family**

# Funding

Financial years	Funding
2008/2009	£6,500,000 (Exemplar School)
2009/2010	£4,561,269
2010/2011	£6,939,269
<b>Totalling</b>	<b>£18,000,538</b>

# Programme

## Phase 1a

**Robin Hood, Henry Whipple, Greenfields and Blue Bell Hill**

Visioning/consultation:	April – December 2008
Stage 1 outline design:	January – April 2009
Planning application:	July – October 2009
Stage 2 detail design:	April – October 2009
Legal and contract issues:	November – December 2009
Construction start:	January 2010
Completion:	December 2010

## Phase 1b **Sycamore and St Ann's Well**

Visioning/consultation:	April – December 2009
Stage 1 outline design:	January – April 2010
Planning application:	July – October 2010
Stage 2 detail design:	April – October 2010
Legal and contract issues:	November – December 2010
Construction start:	January 2011
Completion:	December 2011



## Consultation/visioning

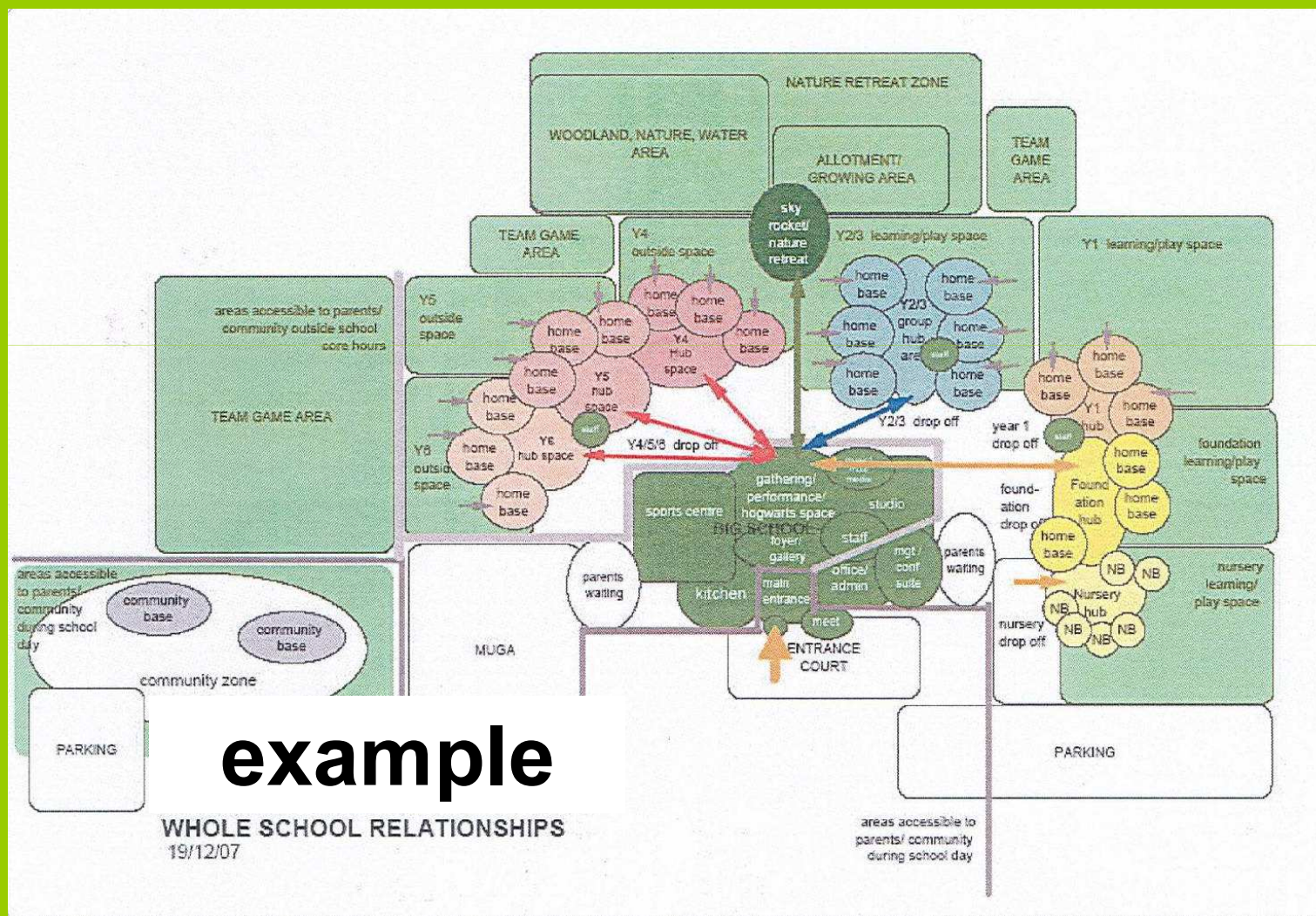
for transformational learning spaces for the 21<sup>st</sup> Century...



**Who....** Parents, children, governors, local community and school staff, diocese, NCC Area committees

**How.....** visioning workshops with stakeholders over a period of 9 months to develop the brief and the initial design

# Consultation/visioning for transformational learning spaces...





# Project aims: for school and community use

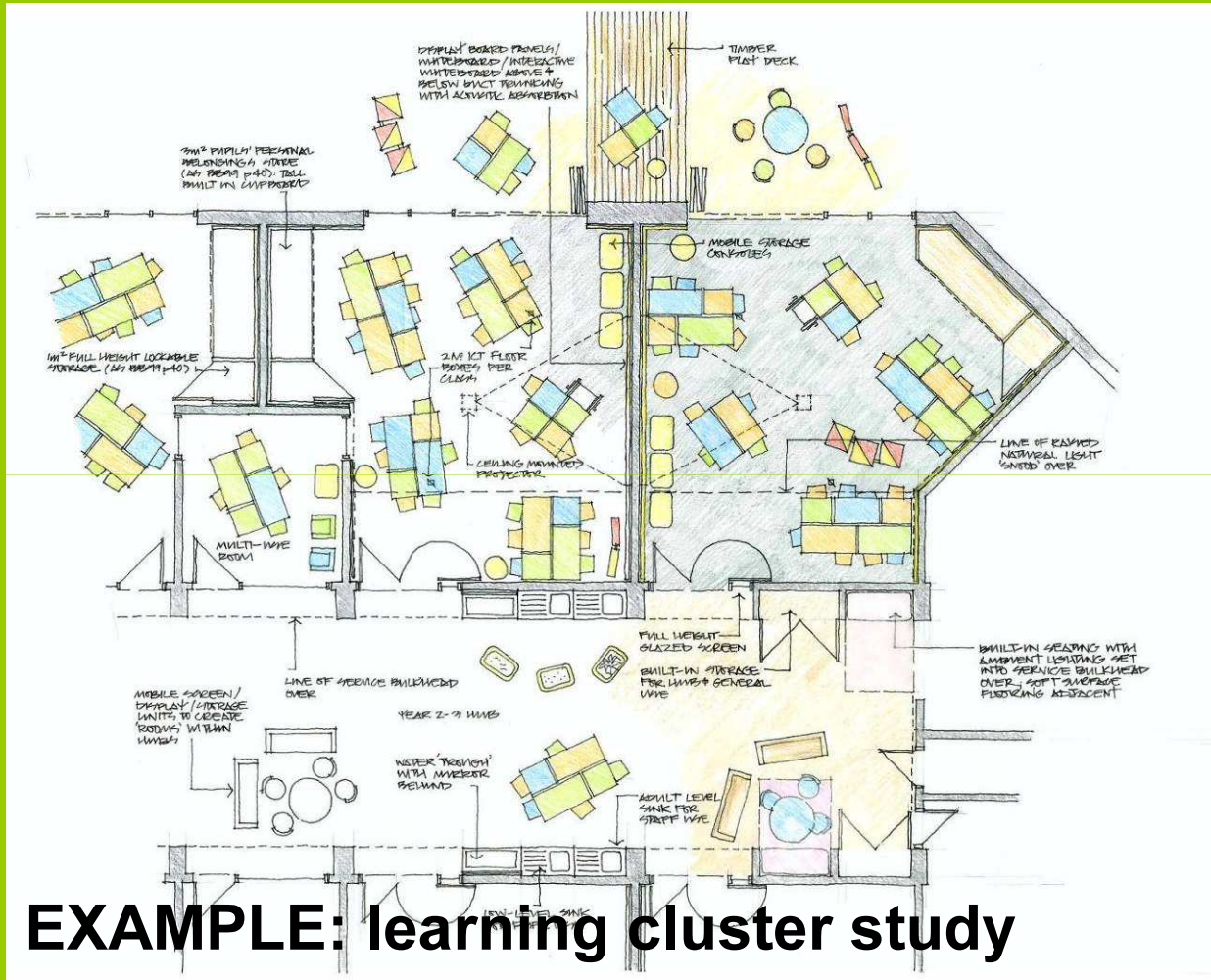
- **good pedestrian access**
  - approaches that are public friendly
- schools as a focus for the local community
- **social opportunities** for parents
- **daytime childcare**
- **dedicated community and nursery facility**
- **after school club**
- **extended schools services**  
.....to help facilitate the core offer
- **Community access to:**
  - **dedicated community facility**
  - **evening use of building's multi-use spaces**



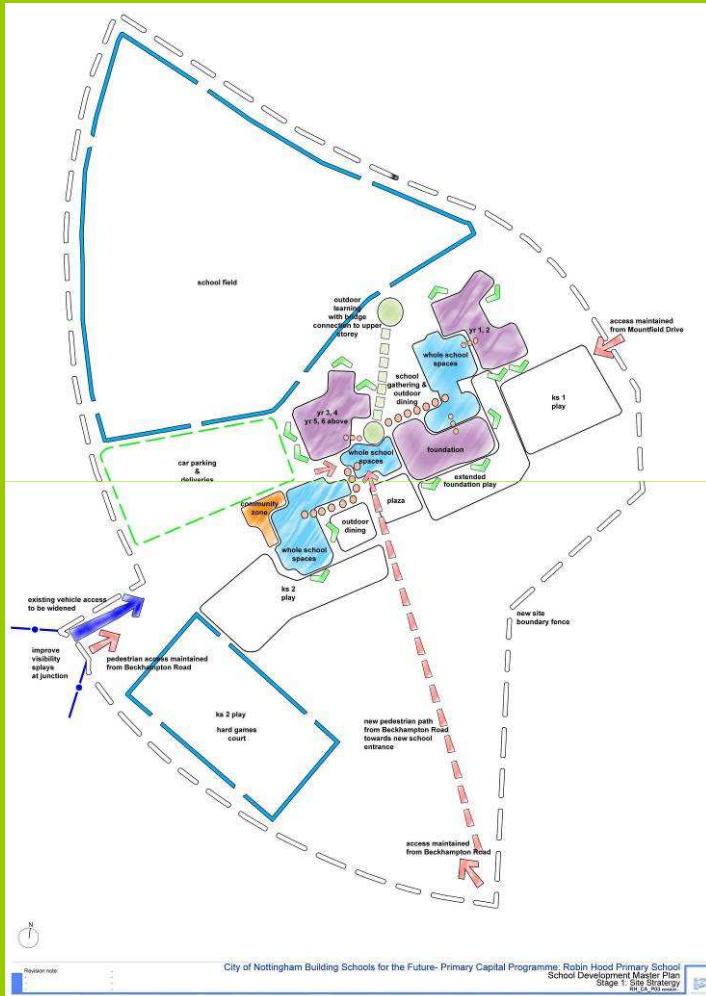
# Review of current proposals

creation of diverse learning environments

- which are lit naturally
- and including direct access to outside teaching areas



# Robin Hood Primary concept site plan



exemplar  
 approach to  
 external spaces  
 adventure  
 play  
 nature + ecology



# Robin Hood Primary concept plan



**inspirational environment**

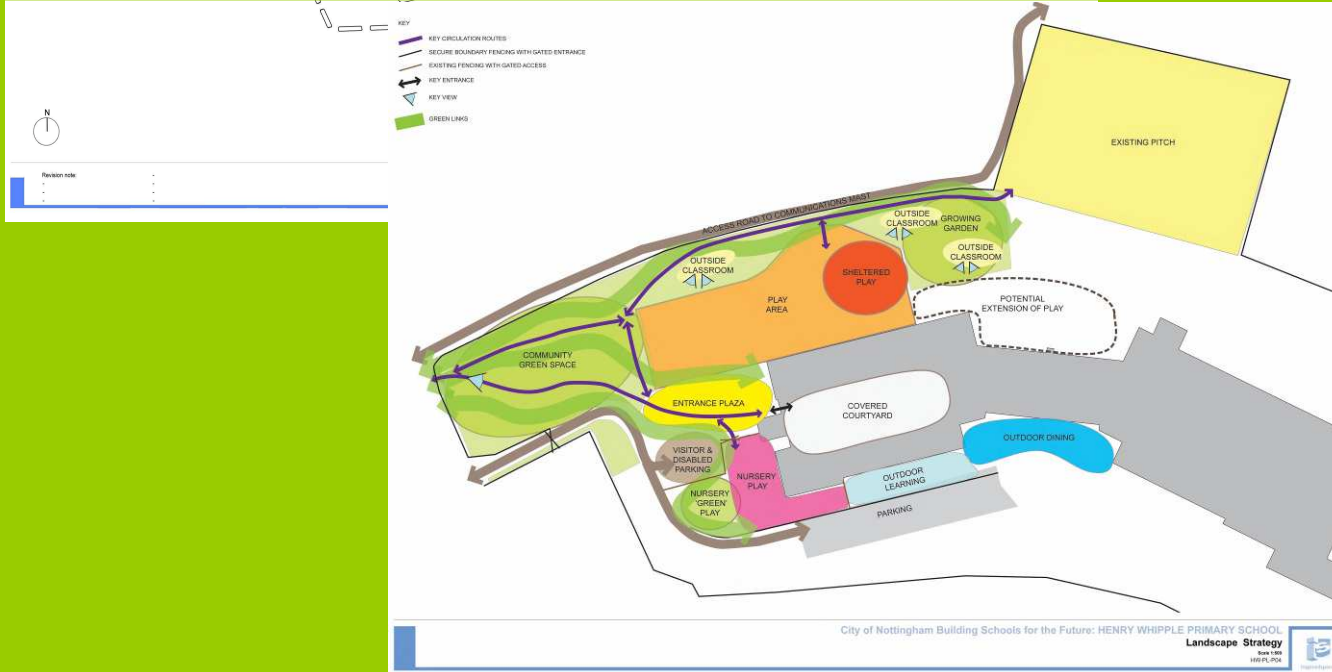
**diverse learning opportunities**

**sense of place**

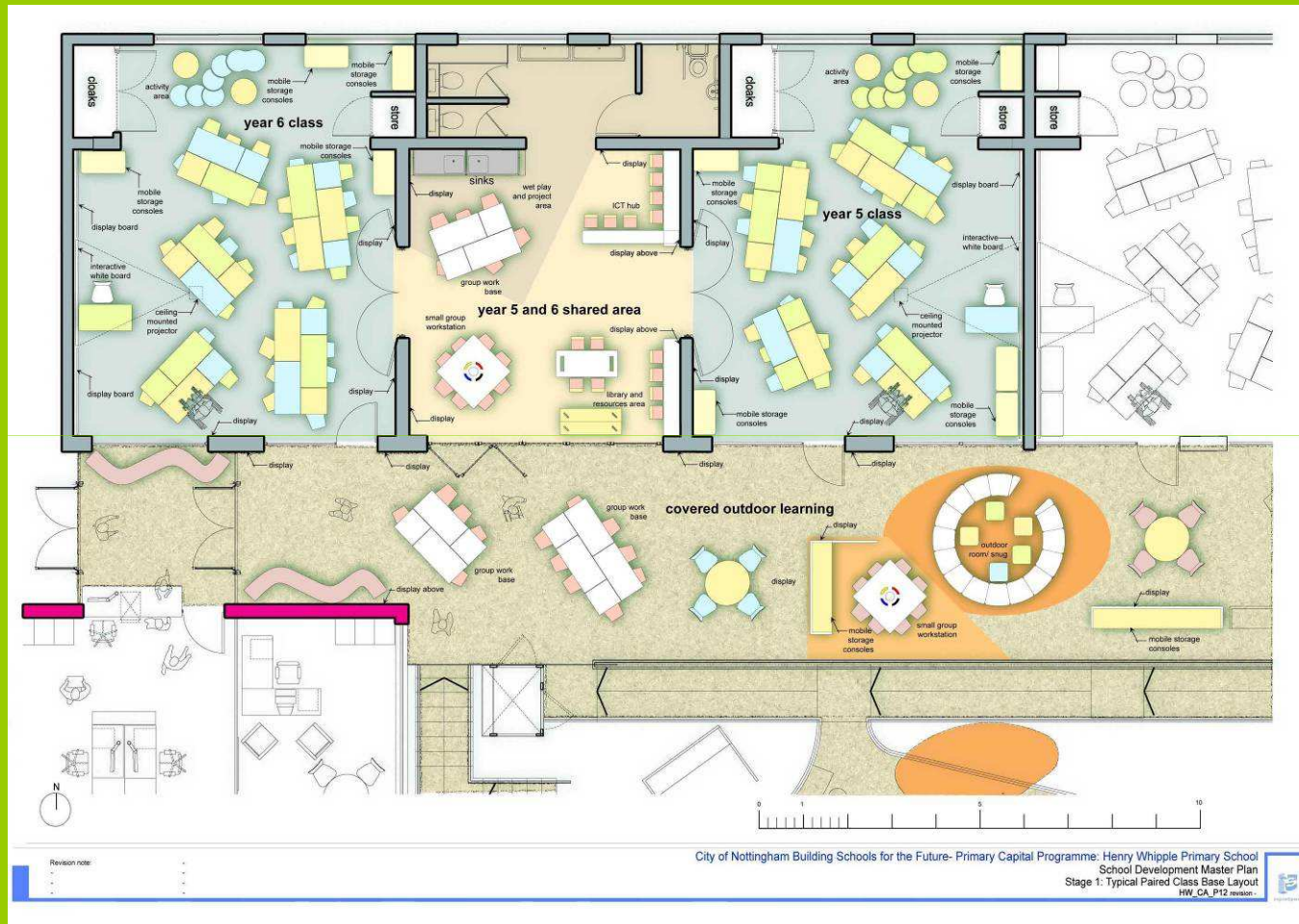


# Henry Whipple Primary concept site plan

exemplar  
approach to  
external spaces  
adventure  
play  
nature + ecology  
inspirational  
environment  
diverse learning  
opportunities  
sense of place



# Henry Whipple Primary concept plan



exemplar  
approach to  
play

inspirational  
environment

diverse learning  
opportunities

sense of place

# sustainability and the environment: **BSF** aims **BREEAM** ratings- new build 'Excellent'.. Refurb 'very good'

POTENTIAL as finance permits.....

- **reduce energy**

where possible: increased thermal insulation  
– affordable to run and maintain

- **encourage arrival on foot, on bike, by public transport**

- **'passive' design approach**

design provides 'free' air-cooling through natural ventilation + daylight

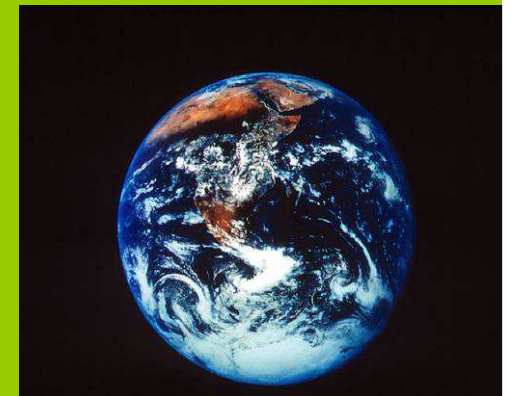
- **sustainable materials specified from BRE's green guide**

- **potential for**

**'passive' heating of hot water** by solar panels,  
**demonstration features** - wind turbine and photovoltaics  
grey water recycled for use in toilet cisterns

- **minimise waste** - with a recycling strategy

- **develop school gardens for production of food and as a learning resource**





# Technology Develops...



1985

*Computing for Enthusiasts*



exemplar approach to external spaces

adventure play

2009 nature + ecology

*Computing for Everyone*

inspirational environment

diverse learning opportunities

sense of place





# Primary Virtual Learning Environment (PVLE) – The Virtual Primary school

- **Across ALL schools, the Nottingham Learning platform will:**
  - Share resources, tools and applications
  - Allow ALL Primary schools to benefit from the PCP
  - Improve transition between Primary and Secondary phases

## The Learning platform is:

- Developed by Nottingham teachers for Nottingham pupils and students
  - Supported by our BSF partners Ramesys
    - high quality, industry standard solutions and services
  - Supported by the Harnessing Technology initiative to upgrade Primary school infrastructures – improving access to the Platform
- 
- **Phase 1 goes live in April 09**

# Connecting People





# Southwark Primary aerial view from south-east

New school location with foundations shown →

Existing infants school



Nottingham  
City Council



inspiredspaces



# Southwark Primary view from Park Lane





# Southwark Primary

# main entrance approach

